

RAD's high-efficiency ROLLER mills are made of 57 Rockwell hardened steel.

These mills are capable of handling 1.5 to 7.0 tons/hr.

- Single pair rollers or stacked
- Heavy-duty painted steel construction
- Rollers made of 57 rockwell c hardened steel
- 1.5 To 7.0 Tonnes/hour
- Easy-access magnetized drawer
- Easy to set pressure and roller gap
- Safety grill attached to the hopper
- Equipment can be used in brewing
- Adjustable legs
- Accessories available



MODEL 200 AND 300

SPECIFICATIONS AND CAPACITY OF SINGLE ROLLER MILL:

MODEL	ROLLER DIAMETER	ROLLER WIDTH	CORRUGATION (TEETH / INCH)	DRY CORN	HIGH MOISTURE CORN	DRY SMALL GRAIN	HIGH MOISTURE SMALL GRAIN
200	6-1/2"	4-1/2"	5	4.3T/H	3.7T/H	-	-
			8.5 (inclined)	2.7T/H	2.5T/H	1.5T/H	1.2T/H
			10.5	-	-	1.2T/H	1.0T/H
300	6-1/2"	7-1/2"	5	7.0 T/H	2.5 T/H	-	-
			8.5 (inclined)	4.5 T/H	4.2 T/H	2.5 T/H	2.0 T/H
			10.5	-	-	2.1 T/H	1.7 T/H

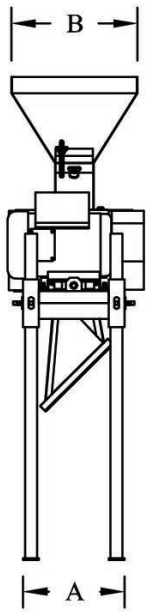
SUGGESTED MOTOR:

MODEL	GRAIN	HP	RPM
200	CORN	2	1800
	BARLEY	3	1800
300	CORN	3	1800
	BARLEY	5	1800

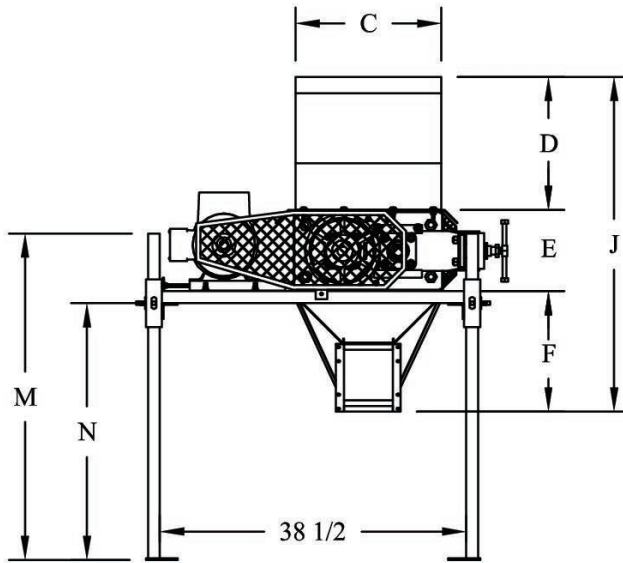
- 57 Rockwell C tempered steel roller
- Heavy Steel Robust Construction
- Easy Access Magnet Drawer
- Easy Pressure and spacing of rollers
- Safety mechanism in case of foreign object passing
- Other accessories available

Specifications are subject to change without notice

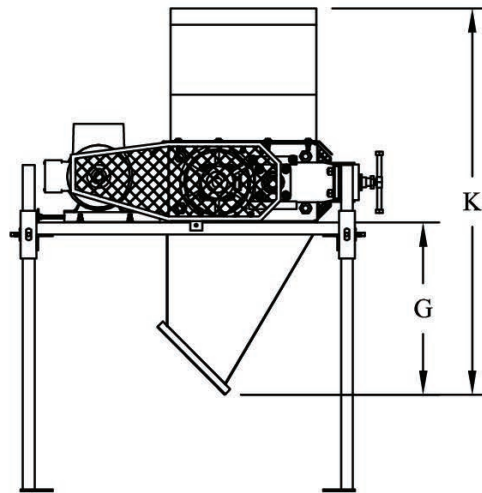




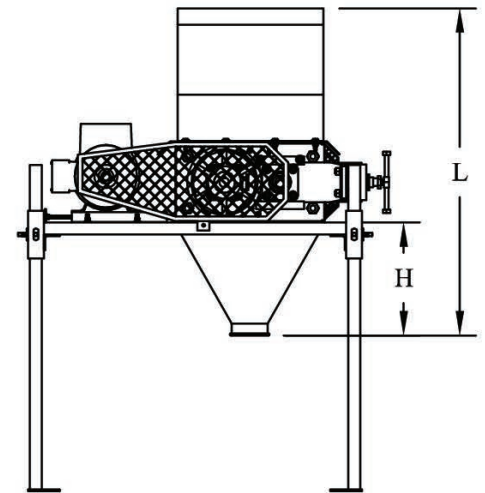
END VIEW



45° PERPENDICULAR OUTLET



45° PARALLEL OUTLET



BAGGING OUTLET

DIMENSIONS:

MODEL	A	B	C	D	E	F	G	H	J	K	L	M	N MAX.
200	12-1/2	15-7/8	18-1/4	16-3/4	10-1/4	15-1/8	21-5/8	14-1/8	42	48-5/8	41-1/8	41	38-1/2
300	15-3/4	15-7/8	18-1/4	16-3/4	10-1/4	15-1/8	21-5/8	14-1/8	42	48-5/8	41-1/8	41	38-1/2

