

RAD CHAIN CONVEYORS MODELS

RAD Chain Conveyors are high performance systems for moving your crops efficiently. They offer conveyors for all applications including; Inclined Receiving Conveyors, Round Bottom Conveyors, Double-Run Conveyors, En-Masse Conveyors and Low Profile Silo Conveyors.

BUILT TO LAST

RAD Conveyors are heavy duty galvanized construction offers with optional liners in hardox or uhmw. All conveyors are industrial design to increased strength & durability.

MULTIPLE FEATURES

RAD Conveyors offer many features to maximize your performance to reduce operation costs. High quality bearings, hardened teeth sprockets, nylon paddles, heavy duty takes-up, hd chain, larger attachments plates, stainless steel return rails, TGP 1045 shafts are only some of the standard features of our conveyors.

RAD Round Bottom, Drag Conveyor



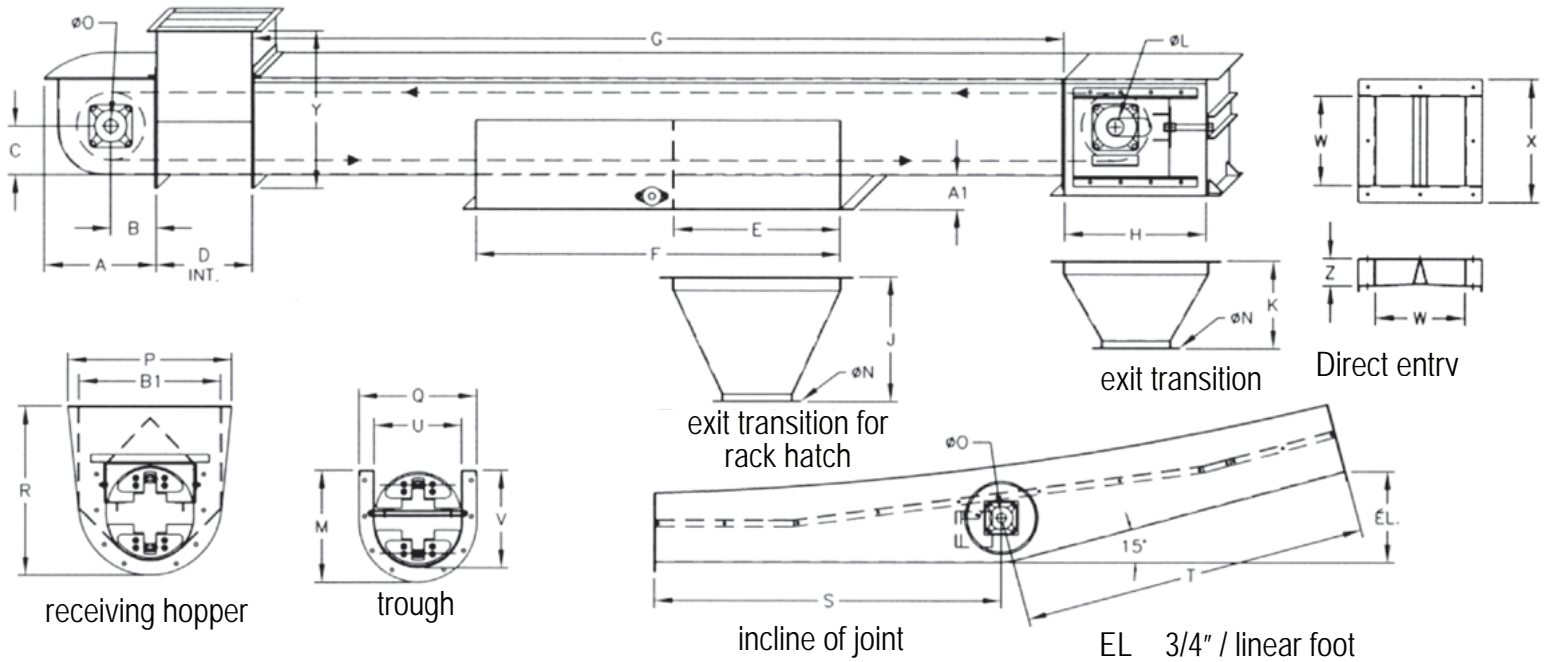
Close up of Round Bottom Conveyor



THE ROUND BOTTOM PADDLE AND CURVED BOTTOM CONVEYOR ENSURE A COMPLETE CLEAN-OUT, LESS GRAIN DAMAGE AND HIGH EFFICIENT OPERATION

- High performance extra heavy-duty galvanized construction built to last
- 6" to 18" diameter conveyor
- 600 to 15,000 bushels/hour
- 15 degrees short radius inclined section available (24"-36")
- Self-cleaning hot dip galvanized Tail section 10-12ga frame, liner available
- Abrasion resistant A.R steel (dormex) bolted wear plate available on receiving hopper
- 8-14ga pre-assembled trough section galvanized, UHMW round formed liner available.
- Head section 8-12ga housing with heavy duty chain tension take-up system, shaft up to 3-15/16"
- Double chain system available on the 18" conveyor
- Heavy duty cast sprocket
- Heavy-duty pillow block Dodge bearings with turned ground and polished shaft.
- Dust and weather tight, maintenance friendly
- Highly resistant 12ga type 304 stainless steel return rail
- UHMW paddle reducing friction with no metal-to-metal contact
- Each UHMW paddle is bolted to a formed steel backer plate welded onto the chain
- 81X and 81XH roller welded chain is engineered for durability, reliability and longevity. Solid bushing, solid roller and quad staked riveting.
- Dodge belt speed gear reducer standard.

RAD Round Bottom, Drag Conveyor *cont'd*



DIMENSIONS:

DIA.	A	B	C	D	E	F	G	H	J	K	L	M	N	O
6"	9-3/8"	3-3/4"	4"	10"	17-3/8"	41-1/2"	5'-10"	18"	12-1/4"	12-3/4"	1-7/16"	9-3/8"	6"	1-1/4"
9"	12-1/2"	5"	5-5/8"	12"	23-3/8"	52"	5'-10"	18-1/8"	19-1/8"	11-1/2"	1-15/16"	12-3/4"	8"	1-1/2"
12"	16-1/2"	6-3/4"	7-1/4"	14"	24-3/8"	53-3/4"	6'-12"	21"	18-3/8"	13"	2-7/16"	16-3/8"	10"	2"
14"	19"	8"	8-1/2"	16"	27-3/8"	59-3/4"	6'-12"	24"	19-5/8"	13-3/4"	2-3/4"	18-7/8"	12"	2-1/4"
16"	21-3/8"	9-1/8"	9-5/8"	16"	27-3/8"	59-3/4"	6'-12"	24"	19-5/8"	13-5/8"	2-15/16"	21-1/4"	12"	2-3/4"
DIA	P	Q	R	S	T	U	V	W	X	Y	Z	A1	B1	
6"	16-1/4"	9-3/4"	15"	-		7"	8-1/8"	7"	10"	13-5/8"	3"	5"	13"	
9"	21-1/4"	13-3/8"	20-1/8"	60"	60"	10"	11-1/4"	10"	13-3/4"	18-3/4"	3"	5"	18"	
12"	24-1/4"	17-1/2"	25"	72"	72"	13"	14-3/8"	13"	17-7/8"	23-1/4"	4"	5"	21"	
14"	27"	19-1/2"	29-1/8"	72"	72"	15"	16-7/8"	15"	20"	27-1/8"	4"	5"	24"	
16"	30-1/4"	21-5/8"	31-7/8"	72"	72"	17"	19-1/4"	17"	22"	30-3/8"	4"	5"	27"	

CAPACITY:

	RPM	BU / HR	FT / HR	HP / PI	HP MAX.
6" @ 85 ft/min	62	600	750	.012	2
@ 128 ft/min	92	900	1125	.017	3
@ 170 ft/min	123	1200	1500	.023	3
9" @ 83 ft/min	42	1200	1500	.022	5
@ 104 ft/min	52	1500	1875	.027	5
@ 167 ft/min	83	2400	3000	.044	7.5
12" @ 99 ft/min	37	2400	3000	.040	7.5
@ 123 ft/min	47	3000	3750	.050	10
@ 144 ft/min	55	3500	4375	.058	10
14" @ 108 ft/min	35	3500	4375	.059	10
@ 123 ft/min	40	4000	5000	.068	10
@ 154 ft/min	50	5000	6250	.085	10
16" @ 120 ft/min	35	5000	6250	.083	10
@ 135 ft/min	39	5600	7000	.094	10
@ 154 ft/min	44	6400	8000	.106	10

The capacities shown are for horizontal conveyors transporting free-flowing dry material at 45 lb./cu or 56 lb./bu. Maximum inclination for En-masse conveyor is 14 degrees. Capacities may vary based on the conveyor's degree of inclination and the material being transported. **All conveyors are made of galvanized steel or painted steel available.**

SPECIFICATIONS:

	6"	9"	12"	14"	16"
Tail	12 ga	12 ga	12 ga	11 ga	10 ga
Divided entrance	12 ga	12 ga	12 ga	11 ga	10 ga
Trough	14 ga	14 ga	12 ga	12 ga	12 ga
Head	12 ga	12 ga	12 ga	11 ga	10 ga
Receiving hopper	16 ga	16 ga	14 ga	14 ga	14 ga
Chain	CA550	81X	81X	81X	81X
Chain sprocket	10 teeth	9 teeth	12 teeth	14 teeth	16 teeth
Paddle thickness	3/8"	3/8"	3/8"	3/8"	1/2"

